

# PERFORMANCE SCHEDULES

Postal entries close Wednesday 17 June 2026  
Online entries close Saturday 4 July 2026

## ALASKAN MALAMUTE CLUB OF VICTORIA INC

SLEDDING EVENT  
WELLSFORD STATE FOREST  
SATURDAY 11 & SUNDAY 12 JULY 2026  
Judge  
Mr Ralph Koch



Full schedule available from the Secretary:  
James Ganson or via Show Manager  
Enquiries: 0409 939 211 (no calls after 9pm) or amcvinc@gmail.com

Entries close Sunday 26 July 2026

## GIPPSLAND OBEDIENCE DOG CLUB INC

14TH RETRIEVING ABILITY TEST FOR GUNDOGS (RATG) NOVICE & OPEN  
GIPPSLAND AREA  
SUNDAY 2 AUGUST 2026



Full schedule available from:  
Trial Secretary or via Show Manager  
Enquiries: 0404 565 255 (no calls after 9pm) or weilandweis1@gmail.com

Entries close Friday 3 July 2026 at midnight

## MELBOURNE & DISTRICT DANCES WITH DOGS CLUB INC

DOUBLE DANCES WITH DOGS TRIAL  
BULLA EXHIBITION CENTRE, UNITING LANE, BULLA  
SATURDAY 11 JULY 2026



Full schedule available from the Secretary:  
Mira Tomasello or via Top Dog Events  
Enquiries: 0411 463 291 (no calls after 9pm) or miratomasello14@gmail.com

Entries close Thursday 30 July 2026

## DANCES WITH DOGS CLUB OF VICTORIA INC

DANCES WITH DOGS COMPETITION  
BULLA EXHIBITION CENTRE, UNITING LANE, BULLA  
SATURDAY 8 AUGUST 2026



Full schedule available from the Trial Secretary:  
Nikki Janetzki or via Top Dog Events  
Enquiries: 0403 212 226 (no calls after 9pm) or secretary-dwdvic@outlook.com

Entries close Friday 3 July 2026 at midnight

## MELBOURNE & DISTRICT DANCES WITH DOGS CLUB INC

TRIPLE TRICK TRIAL  
BULLA EXHIBITION CENTRE, UNITING LANE, BULLA  
SUNDAY 12 JULY 2026



Full schedule available from the Secretary:  
Mira Tomasello or via Top Dog Events  
Enquiries: 0411 463 291 (no calls after 9pm) or miratomasello14@gmail.com

Entries close Monday 27 July 2026

## SHETLAND SHEPDOG CLUB OF VICTORIA INC

RTB OBEDIENCE & RALLY TRIALS  
MOORABBIN OBEDIENCE DOG CLUB, GR BICKER RESERVE,  
ROWANS ROAD, MOORABBIN  
SATURDAY 8 AUGUST 2026



Full schedule available from the Trial Secretary:  
Michele Moore or via Top Dog Events  
Enquiries: 9562 4642 (no calls after 9pm) or mtmoore@tpg.com.au

Postal entries close Friday 3 July 2026  
Online entries close Sunday 12 July 2026

## WHITE SWISS SHEPHERD DOG ASSOCIATION INC

TRIPLE RALLY & DOUBLE OBEDIENCE TRIALS  
KCC PARK, 655 WESTERNPORT HWY, SKYE  
SUNDAY 19 JULY 2026



Full schedule available from the Secretary:  
Yvonne Campbell or via Show Manager  
Enquiries: 0402 704 734 (no calls after 9pm) or wssdavic@gmail.com

Entries close Sunday 2 August 2026

## WANGARATTA KENNEL & OBEDIENCE DOG CLUB INC

OPEN AGILITY, JUMPING & GAMES TRIALS  
WANGARATTA SHOWGROUNDS, GOLF LINKS LANE, WANGARATTA  
SATURDAY 8 & SUNDAY 9 AUGUST 2026



Full schedule available from the Trial Secretary:  
Kevin Felmingham or via Top Dog Events  
Enquiries: 0418 221 260 (no calls after 9pm) or kfelmng@bigpond.net.au

Entries close Saturday 18 July 2026

## MELBOURNE LURE DOG CLUB INC

BACK PACKING EVENT  
PANTON HILL  
SATURDAY 1 AUGUST 2026  
Judge  
Mrs Sandy Koch



Full schedule available from:  
Trial Secretary or via Show Manager  
Enquiries: 0429 831 418 (no calls after 9pm) or melbourneluredogclub@gmail.com

Entries close Saturday 1 August 2026

## VICTORIAN HERDING ASSOCIATION INC

HERDING TRIALS & TESTS  
105 NILMA SHADY CREEK ROAD, NILMA NORTH  
SUNDAY 9 AUGUST 2026



Full schedule available from the Trial Secretary:  
Helen or via Show Manager  
Enquiries: 0417 512 049 (no calls after 9pm) or info@victorianherdingassociation.com

Postal entries close Friday 24 July 2026  
Online entries close Wednesday 29 July 2026

## SIBERIAN HUSKY CLUB OF VICTORIA INC

SLEDDING EVENT  
KNOWSLEY STATE FOREST  
SATURDAY 1 & SUNDAY 2 AUGUST 2026



Full schedule available from the Trial Secretary:  
Courtney Persson or via Show Manager  
Enquiries: 0481 830 220 (no calls after 9pm) or persson.courtney@gmail.com

Postal entries close Friday 31 July 2026  
Online entries close Monday 3 August 2026 at 9am

## NORTH EAST TRACKING & SCENT CLUB INC

OPEN TRACK AND SEARCH TRIAL  
GIPPSLAND AREA  
FRIDAY 14 & SATURDAY 15 & SUNDAY 16 AUGUST 2026



Full schedule available from the Trial Secretary:  
Julie Kenealy or via Top Dog Events  
Enquiries: 0419 436 527 (no calls after 9pm) or julie.kenealy@bigpond.com

# PERFORMANCE SCHEDULES

Entries close Friday 7 August 2026

## BULLA AGILITY DOGS INC

OPEN AGILITY & JUMPING TRIAL  
BULLA EXHIBITION CENTRE, UNITING LANE, BULLA  
SATURDAY 15 AUGUST 2026

Full schedule available from the Trial Secretary:  
Dave Palmer or via Top Dog Events  
Enquiries: 0408 399 927 (no calls after 9pm) or trials@bad.org.au



Entries close Sunday 9 August 2026

## DUTCH SHEPHERD DOG CLUB OF VICTORIA INC

SPRINTDOG TRIAL  
KCC PARK, 655 WESTERNPORT HWY, SKYE  
SATURDAY 22 AUGUST 2026

Full schedule available from the Trial Secretary:  
Aisha Bierman or via Show Manager  
Enquiries: 0451 944 533 (no calls after 9pm) or aisha.bierman@yahoo.com



Postal entries close Friday 31 July 2026  
Online entries close Friday 7 August 2026

## K9 SCENT CLUB INC

OPEN SCENT WORK TRIAL  
GEELONG OBEDIENCE CLUB GROUNDS, 57-67 GUNDOG LANE,  
BELMONT COMMON  
SATURDAY 15 AUGUST 2026

Full schedule available from the Trial Secretary:  
Jo Bates or via Top Dog Events  
Enquiries: 0431 895 007 (no calls after 9pm) or info@k9scentclub.org



Postal entries close Friday 31 July 2026  
Online entries close Saturday 8 August 2026

## HASTINGS & DISTRICT OBEDIENCE DOG CLUB INC

SCENT WORK TRIAL  
HASTINGS CLUB GROUNDS, WESTERNPORT ATHELETICS TRACK,  
HIGH STREET, HASTINGS  
SATURDAY 22 AUGUST 2026

Judges  
Miss Julie Merryfull - Advanced Interiors  
Ms Karen Gowers - Advanced Exteriors  
Full schedule available from the Trial Secretary:  
Cait Langdon or via Top Dog Events  
Enquiries: 0448 731 119 (no calls after 9pm) or hdoctralsec@gmail.com



Entries close Monday 10 August 2026

## AUSTRALIAN SHEPHERD CLUB OF VICTORIA INC

HERDING TESTS & TRIALS  
960 MT LYALL, NYORA  
SATURDAY 15 & SUNDAY 16 AUGUST 2026

Full schedule available from the Trial Secretary:  
Kate Dourley or via Show Manager  
Enquiries: 0421 007 231 (no calls after 9pm) or rozate@gmail.com



Entries close Wednesday 12 August 2026

## GEELONG OBEDIENCE DOG CLUB INC

OPEN TRICK DOG TEST  
BELMONT COMMON, 47-57 GUNDOG LANE, BREAKWATER  
SATURDAY 22 & SUNDAY 23 AUGUST 2026

Full schedule available from the Trial Secretary:  
Janelle Convery or via Top Dog Events  
Enquiries: 0409 138 677 (no calls after 9pm) or janelle.convery@bigpond.com



Entries close Monday 10 August 2026

## AMERICAN STAFFORDSHIRE TERRIER CLUB OF VICTORIA INC

WEIGHT PULL  
KCC PARK, 655 WESTERNPORT HWY, SKYE  
SUNDAY 16 AUGUST 2026  
Judge  
Mrs Madeline Kiel Lodington

Full schedule available from the Trial Secretary:  
Paul Constantinou or via Show Manager  
Enquiries: 0402 201 616 (no calls after 9pm) or amstaffclubofvic@gmail.com



Entries close Tuesday 18 August 2026

## GIPPSLAND OBEDIENCE DOG CLUB INC

TRACK AND SEARCH TRIAL - TESTS 1-10  
TONERS LANE, MORWELL AND SURROUNDING AREAS  
FRIDAY 28 & SATURDAY 29 & SUNDAY 30 & MONDAY 31 AUGUST 2026

Full schedule available from the Trial Secretary:  
Lesley Meikle or via Show Manager  
Enquiries: 0407 195 201 (no calls after 9pm) or bigred@dcsi.net.au



Postal entries close Tuesday 4 August 2026  
Online entries close Sunday 9 August 2026

## BENDIGO OBEDIENCE DOG CLUB INC

OPEN DOUBLE OBEDIENCE & DOUBLE RALLY TRIALS  
FINN STREET RESERVE, 64 FINN STREET, BENDIGO  
SUNDAY 16 AUGUST 2026

Full schedule available from the Trial Secretary:  
Deb Wain or via Top Dog Events  
Enquiries: 0430 134 154 (no calls after 9pm) or debwain@gmail.com



Entries close Friday 21 August 2026

## MOORABBIN & DISTRICTS OBEDIENCE DOG TRAINING CLUB INC

50TH ANNIVERSARY OPEN OBEDIENCE & RALLY TRIALS  
GR BRICKER RESERVE, ROWANS ROAD, MOORABBIN  
SUNDAY 30 AUGUST 2026

Full schedule available from the Trial Secretary:  
Paula Moenclaey-Stoddart or via Top Dog Events  
Enquiries: 0405 399 779 (no calls after 9pm) or gandpms@hotmail.com



Entries close Sunday 16 August 2026

## AUSTRALIAN SHEPHERD CLUB OF VICTORIA INC

RESTRICTED TO BREED VERSATILE EVENT  
SOUTHERN OBEDIENCE DOG CLUB, 56 SODEN ROAD, BANGHOLME  
SATURDAY 22 AUGUST 2026

Full schedule available from the Trial Secretary:  
Mrs Renee Carlson or via Show Manager  
Enquiries: 0431 254 752 (no calls after 9pm) or mva@australianshepherd.org.au



# CONFORMATION SCHEDULES

Entries close Wednesday 1 July 2026

## DUTCH SHEPHERD DOG CLUB OF VICTORIA INC

### OPEN SHOW

KCC PARK, 655 WESTERNPORT HWY, SKYE

FRIDAY 10 JULY 2026

Judge

Miss Vicki McGinty

Full schedule available from the Show Secretary: 

Aisha Bierman or Show Manager

Enquiries Ph: 0451 944 533 (no calls after 9pm) or dsdcvic@gmail.com

Entries close Wednesday 1 July 2026

## DUTCH SHEPHERD DOG CLUB OF VICTORIA INC

### CHAMPIONSHIP SHOW

KCC PARK, 655 WESTERNPORT HWY, SKYE

FRIDAY 10 JULY 2026

Judge

Mrs Maureen Gostelov

Full schedule available from the Show Secretary: 

Aisha Bierman or Show Manager

Enquiries Ph: 0451 944 533 (no calls after 9pm) or dsdcvic@gmail.com

Postal entries close Friday 10 July 2026

Postal entries close Monday 20 July 2026

## UTILITY DOG CLUB OF VICTORIA INC

### RARE BREEDS CHAMPIONSHIP SHOW

KCC PARK, 655 WESTERNPORT HWY, SKYE

SUNDAY 26 JULY 2026

Judge

Mrs Julia Jones

Full schedule available from the Show Secretary: 

Mrs E Stewart or Show Manager

Enquiries Ph: 0448 251 047 (no calls after 9pm) or clazzinewfoundlands@gmail.com

Postal entries close Thursday 30 July 2026

Online entries close Sunday 2 August 2026

## SHIH TZU CLUB OF VICTORIA INC

### CHAMPIONSHIP SHOW

KCC PARK, 655 WESTERNPORT HWY, SKYE

SUNDAY 9 AUGUST 2026

Judge

Mrs Tatjana Urek-Jipping (Slovenia)

Full schedule available from the Show Secretary: 

Maureen Schuyt or Show Manager

Enquiries Ph: 0401 990 954 (no calls after 9pm) or secretary@stcv.org.au

Entries close Friday 17 July 2026

## BULLMASTIFF CLUB OF VICTORIA INC

### OPEN SHOW

KCC PARK, 655 WESTERNPORT HWY, SKYE

SUNDAY 26 JULY 2026

Judge

Ms Christina John

Full schedule available from:

Show Secretary or Show Manager

Enquiries Ph: 9435 8801 (no calls after 9pm) or bullmstr@bigpond.net.au

Entries close Monday 10 August 2026

## SAMOYED CLUB OF VICTORIA INC

### CHAMPIONSHIP SHOW

KCC PARK, 655 WESTERNPORT HWY, SKYE

SUNDAY 16 AUGUST 2026

Judge

Mrs Eleanor Coombs

Full schedule available from the Show Secretary:

John Wilders or Show Manager

Enquiries Ph: 0409 549 014 (no calls after 9pm) or thesamoyedclubofvictoria@gmail.com

Postal entries close Friday 17 July 2026

Postal entries close Thursday 23 July 2026

## NON SPORTING DOG CLUB OF VICTORIA INC

### CHAMPIONSHIP SHOW

KCC PARK, 655 WESTERNPORT HWY, SKYE

SUNDAY 26 JULY 2026

Judge

Ms Yanina Smith (TAS)

Full schedule available from:

Show Secretary or Show Manager

Enquiries Ph: 0468 864 906 (no calls after 9pm) or nsdcvictoria@gmail.com

Postal entries close Friday 17 July 2026

Postal entries close Thursday 23 July 2026

## NON SPORTING DOG CLUB OF VICTORIA INC

### OPEN SHOW

KCC PARK, 655 WESTERNPORT HWY, SKYE

SUNDAY 26 JULY 2026

Judge

Ms Suzanne Turner

Full schedule available from:

Show Secretary or Show Manager

Enquiries Ph: 0434 867 256 (no calls after 9pm) or nsdcvictoria@gmail.com

Postal entries close Friday 10 July 2026

Postal entries close Monday 20 July 2026

## UTILITY DOG CLUB OF VICTORIA INC

### CHAMPIONSHIP SHOW

KCC PARK, 655 WESTERNPORT HWY, SKYE

SUNDAY 26 JULY 2026

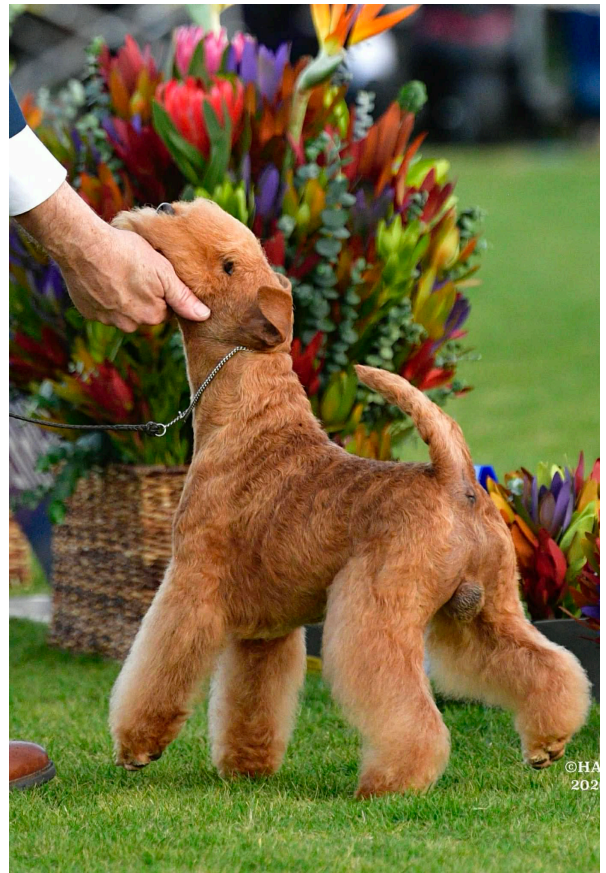
Judge

Ms Tracey Parker

Full schedule available from the Show Secretary: 

Mrs E Stewart or Show Manager

Enquiries Ph: 0448 251 047 (no calls after 9pm) or clazzinewfoundlands@gmail.com



©H.A.  
202

# PERFORMANCE SCHEDULES

Postal entries close Thursday 16 July 2026  
Online entries close Saturday 18 July 2026

## DOGS VICTORIA

OBEDIENCE, TRACKING & ENDURANCE COMMITTEE

### STATE OBEDIENCE TRIALS

KCC PARK, 655 WESTERNPORT HWY, SKYE

**SATURDAY 1 AUGUST 2026**

**Entries to the trial secretary**, Mrs L Klecka, 110-112 McClelland Ave, Lara 3212 or via Show Manager. Cheques made payable to Dog Victoria. Enquiries: 0418 333 312 (no calls after 9pm) or morningmystgoldens@gmail.com

#### Judges:

##### Morning Trial 1

Ms Clare Hodges	CCD
Mrs Veronica Clunes	Novice
Mrs Dawn Ayton	Open
Mr Edwin Howden	UD
Mr Barry Cotton	UDX



##### Afternoon Trial 2

Mrs Veronica Clunes	CCD
Ms Rebecca McGroarty	Novice
Mr Edwin Howden	Open
Mr Barry Cotton	UD
Mrs Dawn Ayton	UDX

**Conditions of Entry:** The committee reserves the right to add and/or substitute judges between classes should the entry warrant it. If using paper entries – separate form for each class clearly marked trial 1 or trial 2 in top right corner. Jump heights – for obedience please state your dog's height at shoulder on your dog's entry and the system will automatically work out the dogs jump height category

**Catalogue:** Free online at OTEC FB page, [www.vicdog.com](http://www.vicdog.com) and Show Manager a few days prior to the trials, or \$5 paid with entry, none available at the trials

**Entry Fee:** \$15 per entry, per class

**Check in Time:** Morning trial 8 – 8.30am, Afternoon trial 11.30am – 12 noon

**Judging Time:** Morning trial 9am, Afternoon trial not before 12.30pm

**Catering:** Not available

**Camping:** Available to book via Show Manager

**Awards:** Trophy and sash for class winners. Sash for second and third. Qualifying cards and ribbons/title sashes

*Please note one presentation will be held at the end of both trials. Please refer to the catalogue for the status at the time should restrictions change*

#### 2026 STATE OBEDIENCE TRIAL CHAMPION

**Judges:** Mr Edwin Howden & Mr Barry Cotton

All qualifying class winners from novice, open, utility and UDX are invited to compete in this special class. (Non-attendance for this class will not affect eligibility for other awards). Entry is restricted to one round per dog and handler team. This class will be judged at completion of all classes at the Saturday obedience trial. The winner will be awarded the title of 2026 State Obedience Champion. Exercises are – heel free and novice recall



Postal entries close Thursday 16 July 2026  
Online entries close Saturday 18 July 2026

## DOGS VICTORIA

OBEDIENCE, TRACKING & ENDURANCE COMMITTEE

### STATE RALLY TRIALS

KCC PARK, 655 WESTERNPORT HWY, SKYE

**SUNDAY 2 AUGUST 2026**

**Entries to the trial secretary**, Mrs L Klecka, 110-112 McClelland Ave, Lara 3212 or via Show Manager. Cheques made payable to Dog Victoria. Enquiries: 0418 333 312 (no calls after 9pm) or morningmystgoldens@gmail.com

#### TOP RALLY DOG FOR 2026

A master course will be set for eligible dogs invited by OTEC. A minimum of 20 stations including Show Manager level exercises. There will be a maximum of 10 stationary exercises.

Check in Time: 8.30 – 8.45am

Start Time: 9am

**Judges:** Ms Patricia Looker & Ms Lorraine McKay

#### Judges:

##### Morning Trial 1

Mrs Helen Evans	Novice
Ms Lorraine McKay	Advanced
Ms Patricia Looker	Excellent
Mrs Dearne Jackson	Master

##### Afternoon Trial 2

Ms Lorraine McKay	Novice
Mrs Helen Evans	Advanced
Mrs Dearne Jackson	Excellent
Ms Patricia Looker	Master

**Conditions of Entry:** The committee reserves the right to add and/or substitute judges between classes should the entry warrant it. If using paper entries – separate form for each class clearly marked trial 1 or trial 2 in top right corner. Jump heights – for rally please state your dog's height at shoulder on your dog's entry and the system will automatically work out the dogs jump height category

**Catalogue:** Free online at [www.vicdog.com](http://www.vicdog.com) a few days prior to the trials, or \$5 paid with entry, none available at the trials

**Entry Fee:** \$15 per entry, per class

**Check in Time:** Morning trial 8 – 8.30am, afternoon trial 11.30am – 12 noon

**Judging Time:** Morning trial 15 minutes after top rally dog, afternoon trial not before 12.30pm

**Catering:** Not available

**Camping:** Available to book via Show Manager

**Awards:** Trophy and rosette for class winners. Rosette for second and third. Qualifying cards and ribbons/title rosettes

*Please note one presentation will be held at the end of both trials. Please refer to the catalogue for the status at the time should restrictions change*

#### 2025 STATE RALLY TRIAL CHAMPION

**Judges:** Mrs Helen Evans & Mrs Dearne Jackson

All qualifying class winners are invited to compete for this award. (Participation is not compulsory). Entry is restricted to one round per dog and handler team. Judging will take place over a modified novice course.

The highest qualifying score will be the winner, should scores be level, the award will go to the fastest time, should times be equal the winner will be determined at the discretion of the judges. This class will be judged at completion of all classes at the Sunday Rally trials. The winner will be awarded the title of 2026 State Rally Champion

# CONFORMATION SCHEDULES

Postal entries close Friday 26 June 2026  
Online entries close Wednesday 1 July 2026

## JUNIOR KENNEL CLUB INC CHAMPIONSHIP SHOW

KCC PARK, 655 WESTERNPORT HWY, SKYE  
SATURDAY 4 JULY 2026

Schedule of classes  
1, 2, 3, 4, 5, 10, 11 & 18 dogs  
1a, 2a, 3a, 4a, 5a, 10a, 11a & 18a bitches



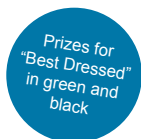
Pre judging for General Specials may take place

Committee do not handle at this show

Entries to the show secretary, PO Box 275, Frankston 3199 or via Show Manager. Cheques made payable to Junior Kennel Club Inc. Enquiries Ph: 0401 027 020 (no calls after 9pm) or juniorkennelclubvic@gmail.com

### Judges

Miss Aimee Petersen (NSW)	Group 1
Miss Madeleine Selby (WA)	Group 2
Mr Joel Wallis	Group 3
Mr Aaron Chato	Group 4
Mrs Courtney Spencer (NSW)	Group 5
Mr Mark Clarke	Group 6
Miss Emily Marshall	Group 7
<b>Mr Mark Clarke</b>	<b>General Specials</b>



**Catalogue:** Complimentary digital copy available via the online provider

**Entry Fee:** \$18, baby puppies \$10

**Judging Time:** 8.30am. Junior Handler State Final to be held during the lunch break at 12.30pm

**Exhibit Numbers:** To be emailed via online provider

**Extreme Weather:** Dogs Victoria Extreme Weather Regulations will apply (Regulation 7.6.8)

**Catering:** Available

**Camping:** Available to book via Show Manager

**Special Prizes:** Cash and sash for all in show and in group awards



Postal entries close Friday 10 July 2026  
Online entries close Wednesday 15 July 2026

## CASEY ALL BREEDS KENNEL CLUB INC

### 4TH CHAMPIONSHIP SHOW

KCC PARK, 655 WESTERNPORT HWY, SKYE

SATURDAY 18 JULY 2026

### Schedule of classes

1, 2, 3, 4, 5, 10, 11 & 18 dogs  
1a, 2a, 3a, 4a, 5a, 10a, 11a & 18a bitches

Pre judging for general specials may take place

Entries to the show secretary, Chris Moore, 236 Beaconsfield-Emerald Road, Beaconsfield 3807 or via Show Manager. Cheques made payable to Casey All Breeds Kennel Club Inc. Enquiries Ph: 0428 983 703 (no calls after 9pm) perfu@bigpond.com



Show Manager

### Judges:

Mrs Anne-Marie Hearn	Group 1
Mrs Barbara Doyle	Group 2
Ms Anne Lenne	Group 3
Mr Sylvano Cassingena	Group 4
Mrs Wendy Boce	Group 5
Mr Peter Frost	Group 6
Mrs Karen Taylor	Group 7
<b>Mrs Anne-Marie Hearn</b>	<b>General Specials</b>

**Catalogue:** Complimentary digital copy will be emailed at 7am on the morning of the show or paper catalogues \$6 pre-ordered

**Entry Fee:** \$18, baby puppies \$13 add \$2 if only entry

**Judging Time:** Junior handlers at the conclusion of the Caulfield & District Kennel Club Show, followed by breed judging not before 11.30am

**Exhibit Numbers:** To be emailed via online provider and will not be available on the day, so please print your own

**Extreme Weather:** Dogs Victoria Extreme Weather Regulations will apply (Regulation 7.6.8)

**Catering:** Available

**Camping:** Available to book via Show Manager

**Special Prizes:** Cash and sash for all in show and in group awards

# CONFORMATION SCHEDULES

Postal entries close Friday 10 July 2026  
Online entries close Tuesday 14 July 2026

## DOGS VICTORIA KCC PARK FRIENDS OF THE PARK “FLOWER POWER” FACILITIES SHOWS

### DOUBLE CHAMPIONSHIP SHOW

ALL PROCEEDS TO ENHANCE KCC PARK FACILITIES

KCC PARK, 655 WESTERNPORT HWY, SKYE

FRIDAY 17 JULY 2026

#### Schedule of classes

1, 2, 3, 4, 5, 10, 11 & 18 dogs  
1a, 2a, 3a, 4a, 5a, 10a, 11a & 18a bitches

*Pre judging for general specials may take place*

*Committee do not enter or handle at these shows  
All groups indoors at KCC Park*

*Monster cart raffle, tickets available online  
Prize for best Flower Power theme dressed exhibitor  
Members lounge for use at this friendly community show*



Show Manager

Entries to to the show secretary, Chris Moore, 236 Beaconsfield-Emerald Rd, Beaconsfield, 3807 or via Show Manager. Cheques made payable to Dogs Victoria. Enquiries Ph: 0428 983 703 (no calls after 9pm) or [perfu@bigpond.com](mailto:perfu@bigpond.com)

#### Judges:

##### The Rose AM Show

Mr Peter Frost  
Mrs Karen Taylor  
Mr Rick Berwick  
Mrs Anne-Marie Hearn  
Mr Sylvano Cassingena  
Mr Leigh Hearn  
Mrs Wendy Boce  
Mrs Julie Keenan

##### The Protea PM Show

Mrs Julie Keenan  
Mr Peter Frost  
Mrs Wendy Boce  
Mr Leigh Hearn  
Mrs Anne-Marie Hearn  
Mr Rick Berwick  
Mr Sylvano Cassingena  
Mr Peter Frost

Group 1  
Group 2  
Group 3  
Group 4  
Group 5  
Group 6  
Group 7

##### General Specials



**Catalogue:** Complimentary digital copy available 6am on the day of the show via online provider or \$6 pre-ordered

**Entry Fee:** \$18, baby puppies \$14 add \$2 if only entry

**Judging Time:** The Rose show 9am. The Protea show will commence at the conclusion of the Rose show and general specials not before 11am

**Exhibit Numbers:** To be emailed via online provider

**Extreme Weather:** Dogs Victoria Extreme Weather Regulations will apply (Regulation 7.6.8)

**Catering:** Available

**Camping:** Available to book via Show Manager

**Special Prizes:** Cash and sash for all in show and in group awards, plus sponsor products for some awards

# CONFORMATION SCHEDULES

Entries close Monday 3 August 2026

## LILLYDALE KENNEL CLUB INC



### FOUR CHAMPIONSHIP SHOWS



KCC PARK, 655 WESTERNPORT HWY, SKYE

FRIDAY 7, SATURDAY 8, SUNDAY 9 AUGUST 2026



**Schedule of classes**  
1, 2, 3, 4, 5, 10, 11 & 18 dogs  
1a, 2a, 3a, 4a, 5a, 10a, 11a & 18a bitches



*Pre judging for general specials may take place at Saturday Shows*

**COMMITTEE DO NOT EXHIBIT OR HANDLE AT THESE SHOWS**  
**INTERNATIONAL PANEL OF JUDGES**  
**EXHIBITOR FRIENDLY SHOWS**  
**INDOOR RINGS**

Entries to, Catherine Raven, 17 Barwon Street, Clyde North 3978 or via Show Manager. Cheques made payable to Lillydale Kennel Club Inc. Enquiries Ph: 0407 546 184 (no calls after 9pm) or catherine.raven2024@gmail.com  
Watch for updates on Lillydale Kennel Club Facebook Page

### Friday

#### *Strike It Lucky*

#### Judges

Dr Evy Widjaja (Indonesia)  
Mrs Jules Mayne (NSW)  
Mrs Tatjana Urek-Jipping (Slovenia)  
Mr Veli-Pekka Kumpumaki (Finland)  
Mr Ivan Theodor Cary (Indonesia)

### Saturday

#### *Pot of Gold*

Mrs Tatjana Urek-Jipping (Slovenia)  
Mr Veli-Pekka Kumpumaki (Finland)  
Mr Kirsi Hannele Jokisilta (Finland)  
Mrs Jules Mayne (NSW)  
Mrs Jules Mayne (NSW)

### Saturday

#### *Treasure Chest*

Mr Veli-Pekka Kumpumaki (Finland)  
Mr Kirsi Hannele Jokisilta (Finland)  
Mr Ivan Theodor Cary (Indonesia)  
Dr Jonathon Mesach (Indonesia)  
Dr Evy Widjaja (Indonesia)

### Sunday

#### *Shades Of Silver*

Mr Ivan Theodor Cary (Indonesia)  
Mrs Esther Joseph  
Dr Jonathon Mesach (Indonesia)  
Dr Evy Widjaja (Indonesia)  
Mrs Tatjana Urek-Jipping (Slovenia)

**Group 1**  
**Group 2**  
**Group 3**  
**Group 4**  
**Group 5**  
**Group 5A Miniature American Shepherds**  
**Group 5B Balance of Breeds**  
**Group 6**  
**Group 7**  
**General Specials**

Mr Kirsi Hannele Jokisilta (Finland)  
Dr Jonathon Mesach (Indonesia)  
Mr Ivan Theodor Cary (Indonesia)

Dr Jonathon Mesach (Indonesia)  
Dr Evy Widjaja (Indonesia)  
Mr Ivan Theodor Cary (Indonesia)

Mrs Tatjana Urek-Jipping (Slovenia)  
Mrs Jules Mayne (NSW)

Mrs Jules Mayne (NSW)  
Mr Veli-Pekka Kumpumaki (Finland)

**Catalogue:** Complimentary digital copy to be emailed via online provider or \$5 pre ordered

**Entry Fee:** \$23.50, baby puppies \$15

**Judging Times:** Friday 10am. Saturday AM 8.30am Group 5A to be judged before Group 4. Saturday PM at the conclusion of AM show or 12 noon, whichever is later. Sunday 9am with junior handlers followed by breed judging

**Exhibit Numbers:** To be emailed via online provider

**Extreme Weather:** Dogs Victoria Extreme Weather Regulations will apply (Regulation 7.6.8)

**Catering:** Light catering available, Club BBQ available Saturday and Sunday

**Camping:** Available to book via Show Manager

**Special Prizes:** Trophy and sash for all in show and in group awards

**Point Score:** AM Show Saturday 8 August 2026 - The Golden Retriever Club of Victoria Inc

*Lillydale Kennel Club Inc is proudly supported by the following loyal sponsors*



# CONFORMATION SCHEDULES

Postal entries close Monday 17 August 2026  
Online entries close Tuesday 18 August 2026

## MACALISTER ALL BREEDS KENNEL & OBEDIENCE CLUB INC & SALE-MAFFRA & DISTRICT KENNEL CLUB INC GIPPSLAND INTERNATIONAL WINTER FESTIVAL FOUR CHAMPIONSHIP SHOWS

MAFFRA RECREATION RESERVE, MCLEAN ST, MAFFRA

FRIDAY 21, SATURDAY 22 & SUNDAY 23 AUGUST 2026



Show Manager

### Schedule of classes

1, 2, 3, 4, 5, 10, 11 & 18 dogs  
1a, 2a, 3a, 4a, 5a, 10a, 11a & 18a bitches

*Pre judging for general specials may take place*



WELLINGTON  
SHIRE COUNCIL  
*The Heart of Gippsland*

Entries to to the show secretary, Mrs L Fairhall, PO Box 306, Maffra 3860 or via Show Manager. Cheques made payable to Macalister All Breeds Kennel & Obedience Club (Friday and Saturday AM Show) and Sale-Maffra & District Kennel Club Inc (Saturday PM and Sunday Show). Enquiries Ph: 0419 880 355 (no calls after 9pm) or [mzilakaz@ozonline.com.au](mailto:mzilakaz@ozonline.com.au)

### Judges:

#### Macalister

##### Friday Show

Mr Shamil Kurmaev (WA)  
Mr Ang Eng Keong (Malaysia)  
Mr Nicholas Tan (Malaysia)  
Ms Maria Heneke (South Africa)  
Ms Pam Douglas (NZ)  
Mr Ang Eng Keong (Malaysia)  
Ms Anna Albrigo (Italy)

#### Macalister

##### Saturday AM Show

Ms Anna Albrigo (Italy)  
Ms Pam Douglas (NZ)  
Mr Shamil Kurmaev (WA)  
Mr Ang Eng Keong (Malaysia)  
Ms Maria Heneke (South Africa)  
Ms Pam Douglas (NZ)  
Mr Nicholas Tan (Malaysia)  
Mr Nicholas Tan (Malaysia)

#### Sale-Maffra (Format 1-4)

##### Saturday PM Show

Mr Nicholas Tan (Malaysia)  
Mr Shamil Kurmaev (WA)  
Mr Ang Eng Keong (Malaysia)  
Ms Pam Douglas (NZ)  
Ms Anna Albrigo (Italy)  
Mr Shamil Kurmaev (WA)  
Ms Maria Heneke (South Africa)

#### Sale-Maffra

##### Sunday Show

Ms Pam Douglas (NZ)  
Mr Nicholas Tan (Malaysia)  
Ms Maria Heneke (South Africa)  
Ms Anna Albrigo (Italy)  
Mr Shamil Kurmaev (WA)  
Mr Nicholas Tan (Malaysia)  
Mr Ang Eng Keong (Malaysia)  
Ms Pam Douglas (NZ)

Group 1  
Group 2  
Group 3  
Group 4  
Group 5  
Group 6  
Group 7  
Local Classes

Ms Maria Heneke (South Africa) Ms Anna Albrigo (Italy)

Mr Ang Eng Keong (Malaysia)

Mr Shamil Kurmaev (WA)

General Specials

**Catalogue:** Complimentary digital catalogue available online

**Entry Fee:** \$21, baby puppies \$12, local member classes \$10

**Judging Time:** Friday 11am. Saturday AM show 8am with junior handlers and local classes, breed judging not before 8.30am. Saturday PM show 30 minutes after conclusion of AM show but not before 11am, whichever is later. Sunday breed judging 9am with junior handlers and local classes to be held during the lunch break  
Group 2 before Group 6 for all four shows

**Exhibit Numbers:** To be emailed via online provider

**Extreme Weather:** Dogs Victoria Extreme Weather Regulations will apply (Regulation 7.6.8)

**Catering:** Available

**Camping:** Available to book from 20 May 2026 via [showday.online/show/maffra](http://showday.online/show/maffra)

**Special Classes:** 24.3 local members 6-18 months, 24.11 local members open (refer to [www.salekennelclub.com](http://www.salekennelclub.com) for eligibility to enter local classes)

**Special Prizes:** Cash and sash for all in show and in group awards



# CONFORMATION SCHEDULES

Postal entries close Tuesday 18 August 2026  
Online entries close Tuesday 25 August 2026

Entries close Friday 11 September 2026

## GEELONG KENNEL CLUB INC

### THREE CHAMPIONSHIP SHOWS

GEELONG SHOWGROUNDS, 79 BREAKWATER ROAD,  
BREAKWATER

**SATURDAY 29 & SUNDAY 30  
AUGUST 2026**

**Schedule of classes**  
1, 2, 3, 4, 5, 10, 11 & 18 dogs  
1a, 2a, 3a, 4a, 5a, 10a, 11a & 18a bitches

*Pre judging for general specials may take place*

**Entries to the secretary,** Catherine Raven, 17 Barwon Street, Clyde North 3978 or via Show Manager. Cheques made payable to Geelong Kennel Club Inc. Enquiries Ph: 0407 546 184 (no calls after 9pm) or catherine.raven@bigpond.com



*Show Manager*

#### Judges

##### Saturday AM Show

Jan Brownlie (NZ)	Stephen Meredith (NZ)	Group 1
Diane Riley (NZ)	Chris Graham (NZ)	Group 2
Kay O'Carroll (NZ)	Jan Brownlie (NZ)	Group 3
Chris Graham (NZ)	Lavina Diamanti (NZ)	Group 4
Kathleen Hardwick (NZ)	Diane Riley (NZ)	Group 5
Lavina Diamanti (NZ)	Kathleen Hardwick (NZ)	Group 6
Stephen Meredith (NZ)	Kay O'Carroll (NZ)	Group 7

##### Saturday PM Show

Lavina Diamanti (NZ)	Kay O'Carroll (NZ)	General Specials
----------------------	--------------------	------------------

##### Sunday Show

Chris Graham (NZ)	Group 1
Stephen Meredith (NZ)	Group 2
Kathleen Hardwick (NZ)	Group 3
Kay O'Carroll (NZ)	Group 4
Lavina Diamanti (NZ)	Group 5
Jan Brownlie (NZ)	Group 6
Diane Riley (NZ)	Group 7

##### Stephen Meredith (NZ)

Lavina Diamanti (NZ)	General Specials
Jan Brownlie (NZ)	Puppy Sweepstakes
Chris Graham (NZ)	Veteran Sweepstakes
Kay O'Carroll (NZ)	Bred by Exhibitor Sweepstakes
Kathleen Hardwick (NZ)	Local Sweepstakes
	Beginner Sweepstakes



**Catalogue:** Complimentary copy available via online provider, hard copy \$6 pre-ordered

**Entry Fee:** \$19, \$12 baby puppies, \$10 sweepstakes classes

**Judging Time:** Saturday AM Show 8.30am, junior handlers to be held at the conclusion of breed judging, prior to General Specials. Saturday PM Show to start after the AM show but not before 12 noon. Sunday 8.30am with all sweepstakes concurrently followed by breed judging not before 9am

**Exhibit Numbers:** Available via online provider

**Extreme Weather:** Dogs Victoria Extreme Weather Regulations will apply (Regulation 7.6.8)

**Catering:** Available

**Camping:** Powered camping can be booked with Geelong Showgrounds 03 5221 1707 and state you are attending the dog show.

**Special Prizes:** Trophy and sash for all in show and in group awards, Cash and sash for sweepstakes awards

## AUSTRALIAN CATTLE DOG CLUB OF VICTORIA INC

### AUSTRALIAN WORKING ICONS CHAMPIONSHIP SHOW

IN CONJUNCTION WITH MELBOURNE ROYAL

**SATURDAY 26 SEPTEMBER 2026**

**Schedule of classes**  
1, 2, 3, 4, 5, 10 & 11 dogs  
1a, 2a, 3a, 4a, 5a, 10a & 11a bitches



*Show Manager*

**Entries to the show secretary,** PO Box 9077, Sale 3853 or via Show Manager. Cheques made payable to Australian Cattle Dog Club of Victoria Inc. Enquiries Ph: 0417 227 470 (no calls after 9pm) dragons1975@hotmail.com

#### Judges:

Mr Christian Jouanchicot (France)	Australian Cattle Dog, Australian Stumpy Tail Cattle Dogs, Australian Kelpies
-----------------------------------	-------------------------------------------------------------------------------------

**Catalogue:** Complimentary digital copy available via online provider

**Entry Fee:** \$20 non members, \$18 members

**Judging Time:** To be confirmed

**Exhibit Numbers:** Available via online provider

**Extreme Weather:** Dogs Victoria Extreme Weather Regulations will apply (Regulation 7.6.8)

**Catering:** Available from the Melbourne Show

**Special Prizes:** Trophy and sash for Best in Show and Runner Up Best in Show and cash and sash for all other classes

**Sponsors:** Maehonehe Australian Cattle Dog and Pureheel Australian Cattle Dogs

